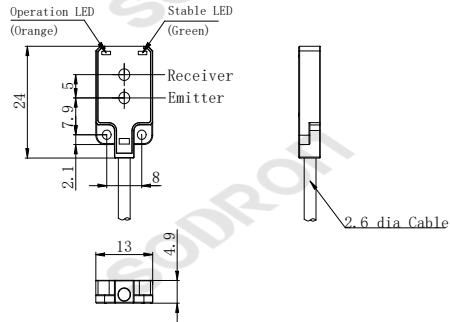




**Dimensions**



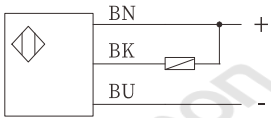
**Model**

- PF12-B25BNOS
- PF12-B25BNCS
- PF12-B25BPOS
- PF12-B25BPCS

**Technical parameters**

	Detection method	Distance Setting Reflective Type	
Model	NPN	PF12-B25BNOS	PF12-B25BNCS
	PNP	PF12-B25BPOS	PF12-B25BPCS
	Output method	Light-ON	Dark-ON
<b>Product features</b>	Detection distance	4mm ~ 25mm(8 mm at center) (Matte white paper 50×50 mm)	
	Standard detection Object	> Φ0.2 mm Opaque objects (at a set distance of 15 mm)	
	Light source	640nm Red LED	
	Power supply voltage	DC 12~24V ±10% , impulse (P-P) < 10%	
	Residual voltage	< 1V( load current ≤50mA)	
	Current consumption	< 15mA	
<b>Connection</b>	Load current	≤50mA	
	Circuit protection	Power reverse polarity protection, short circuit protection, overload protection	
	Response time	< 1ms	
	Indicator light	Output LED: Orange LED Power/stable: Green LED	
	Connection method	Cable 2m	
	Ambient temperature	Work: -25 ~ +55°C; Store: -30 ~ +70°C, (No dew condensation or icing allowed)	
	Ambient humidity	Work: 35 ~ 85%RH, Store: 35 ~ 95%RH, (No dew condensation)	
	Ambient illumination	Sunlight: 10,000Lx lamplight: 3,000Lx	
	Vibration resistance	10~55Hz double-amplitude 1.5mmX,Y,Z 2h	
	Withstand voltage	1000 VAC, 50/60 Hz, 1 min	
	Insulation resistance	> 20MΩ (DC500V megger) between current-carrying parts and case	
	Shock resistance	500m/s <sup>2</sup> X,Y,Z , directions for 3 times	
	Protection class	IEC IP65	
<b>Material</b>	Housing	PC+ABS	
	Lens	PC	

**NPN**



**PNP**

